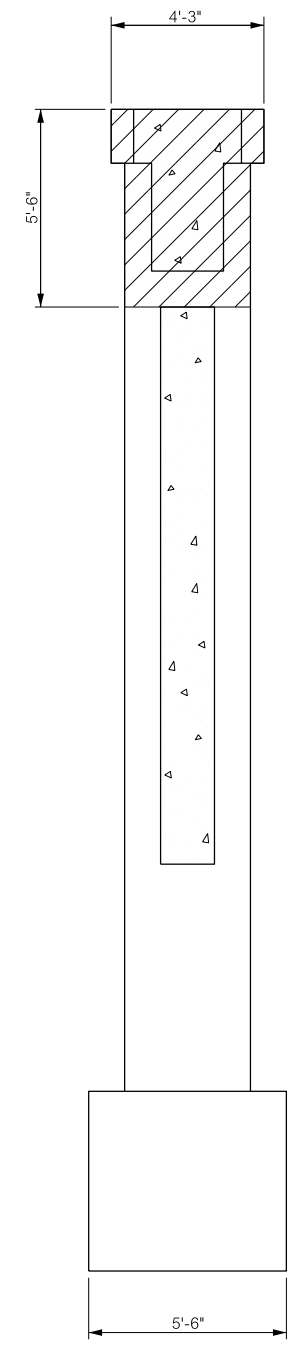
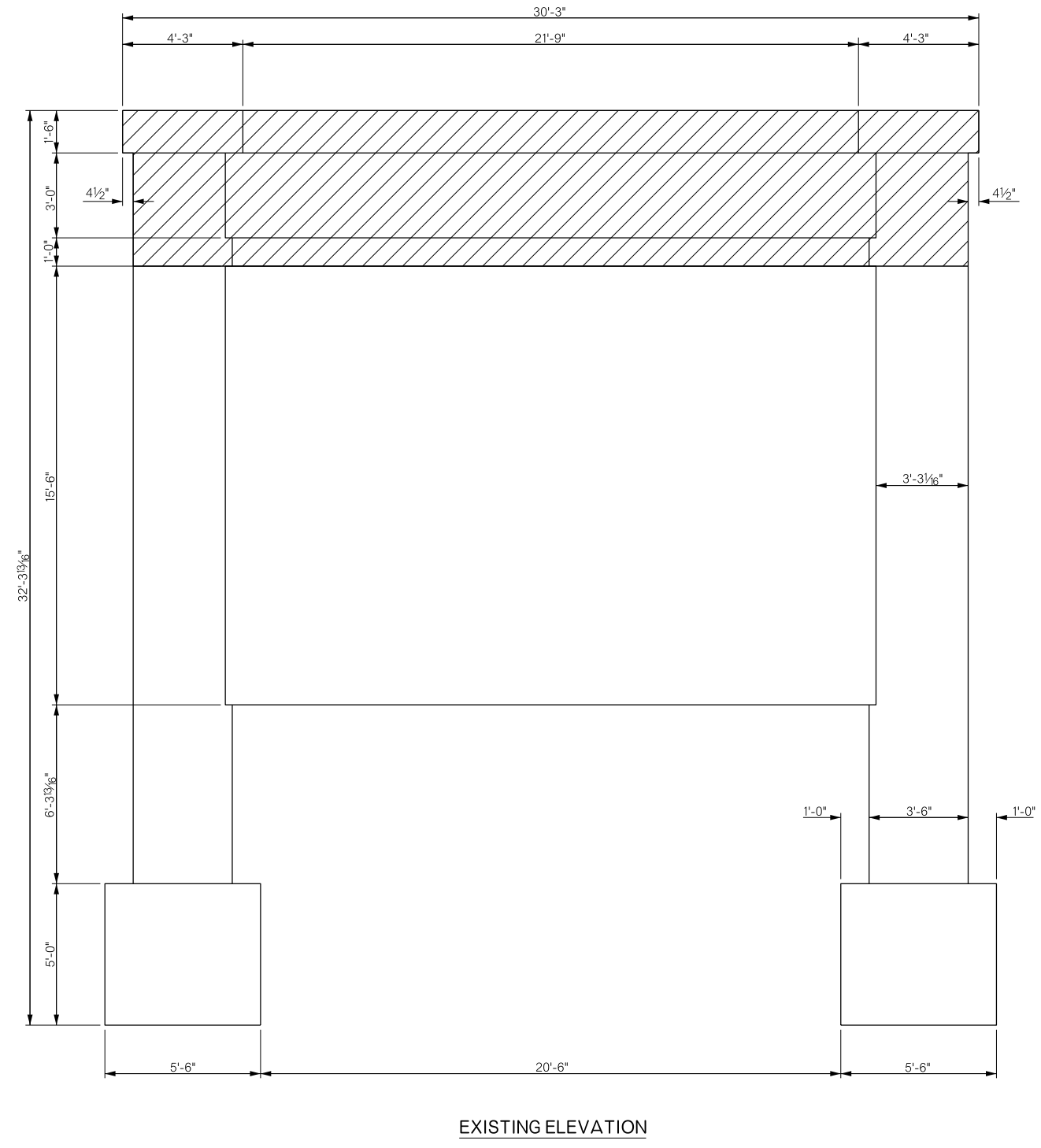
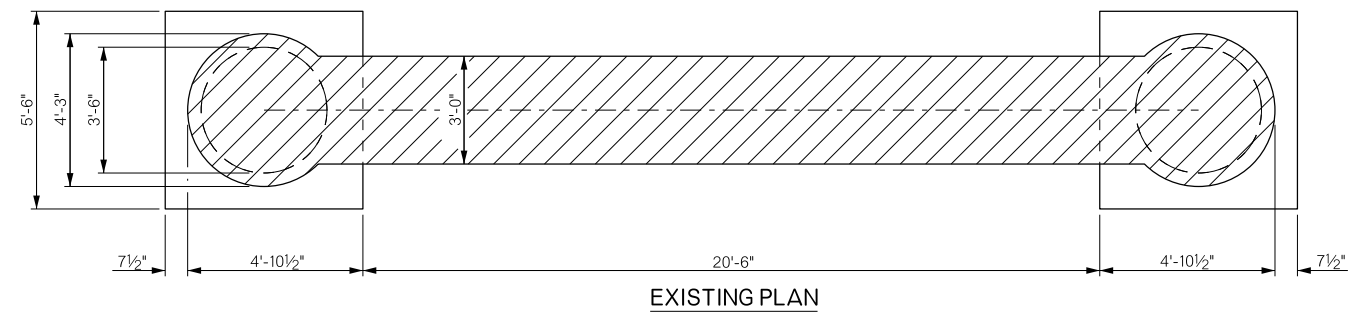
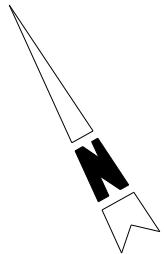


REVISIONS		
REV. NO.	DESCRIPTION	DATE



PORTION OF EXISTING STRUCTURE TO BE REMOVED.

NOTE: SAW CUT AND REMOVE TOP OF PIER CAP CONCRETE AND REINFORCING TO A DEPTH OF 5'-6" LEAVING ONLY EXISTING COLUMN VERTICAL REINFORCING WHICH WILL BE CLEANED AND STRAIGHTENED.

BRIDGE "A" SH-78 OVER CHUCKWA CREEK		BRYAN COUNTY		Design	CJO	6/15
PIER DETAILS (SHEET 1 OF 3)				Detail	DPG	8/15
				Check	TEE	9/15
STATE OF OKLAHOMA				DEPARTMENT OF TRANSPORTATION		
JOB/PIECE NO. 27912(04)				SHEET NO. B015		